



中国认可
国际互认
检测
TESTING
CNAS L12524

Test Report

Sample Name: The integrated circuit

Part Number: MC68HC908QY2CPE

Manufacturer: Freescale

Customer: _____

Shenzhen Chuangxin Online Testing Service Co., Ltd.

October 31, 2024

Test Report

Customer:

Customer Address:

Sample Name: The integrated circuit

Part Number: MC68HC908QY2CPE

Manufacturer: Freescale

Date Code: 1343

Package Type: DIP-16

Quantity Received: 1 PCS

Quantity Inspected: 1 PCS

Date Received: 10/31/2024

Date Tested: 10/31/2024/10:00 - 10/31/2024/11:30

Issued by

(Stamp)

Tested by _____

Inspected by _____

Approved by _____

Test Items

External visual inspection

Pin correlation test

Programming test

Solderability analysis

Radiography(X-ray)

XRF test

Key functional test(KFT)

Baking

Tape and reel

Top permanency test

Internal visual inspection

SAT test

Cross section

Methods & Equipment

1.1 Test standard:

- **MIL-STD-883L-2019 2003.13**

1.2 Optical microscope:

- Equipment spec:

Optical microscope: SEZ-260 X7-X45(Due date: 07/17/2025)

Metalloscope: FJ-5A X50-X1000 (Due date: 07/17/2025)

1.3 Tin melting furnace:

- Equipment spec:

Tin melting furnace: BK-207(Due date: 07/17/2025)

Flux: No. 1 standard active rosin flux

1.4 Constant temperature humidity chamber

- Equipment Spec:

constant temperature humidity chamber: -60°C~150°C(Due date: 07/17/2025)

1.5 Datasheet Reference:

- 《Freescale MC68HC908QY2CPE》 :

https://www.findic.com/doc/browser/1e9q43A4e?doc_id=71683517#locale=zh-CN

Analysis Summary

Solderability analysis:

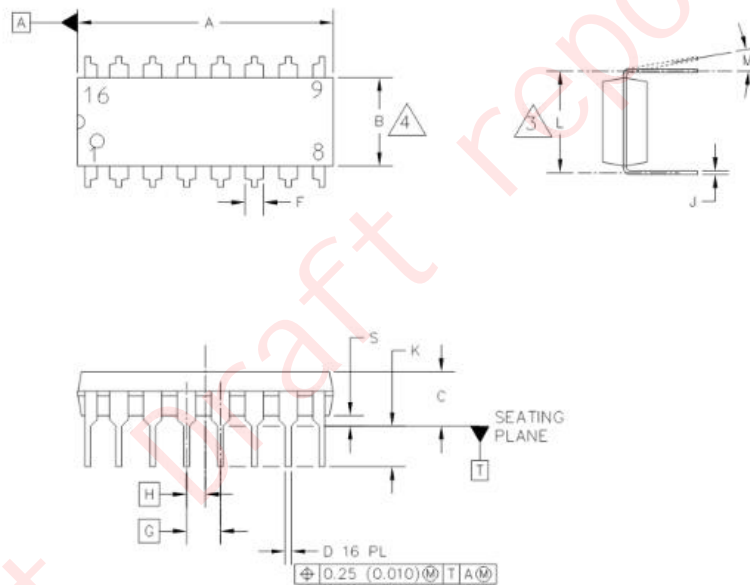
Applicable standard: **MIL-STD-883L-2019 2003.13**

Solderability tested were performed on 1 PCS sample using the dip and look methods. 1 PCS pass solderability test. The dipped portion of the terminations is more than 95% covered by a continuous new solder coating.

1. Device description:

The MC68HC908QY4 is a member of the low-cost, high-performance M68HC08 Family of 8-bit micro-controller units (MCUs). The M68HC08 Family is a Complex Instruction Set Computer (CISC) with a Von Neumann architecture. All MCUs in the family use the enhanced M68HC08 central processor unit (CPU08) and are available with a variety of modules, memory sizes and types, and package types.

2. Package dimensions:

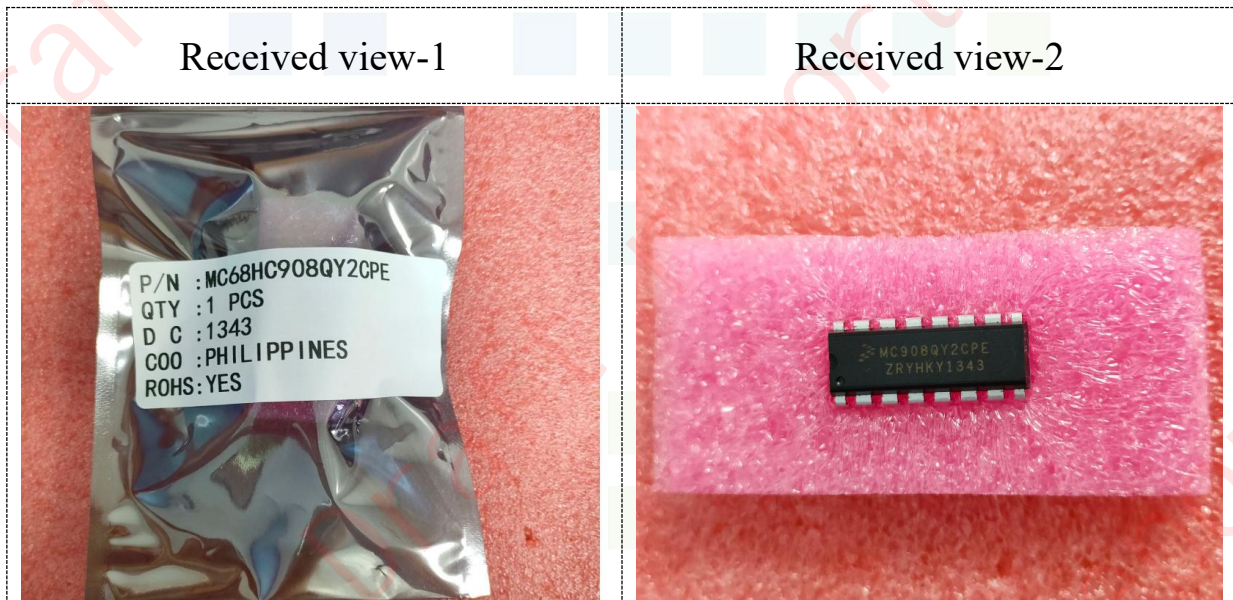


DIM	MILLIMETERS		INCHES	
	MIN	MAX	MIN	MAX
A	18.80	19.55	0.740	0.770
B	6.35	6.85	0.250	0.270
C	3.69	4.44	0.145	0.175
D	0.39	0.53	0.015	0.021
F	1.02	1.77	0.040	0.070
G	2.54 BSC		0.100 BSC	
H	1.27 BSC		0.050 BSC	
J	0.21	0.38	0.008	0.015
K	2.80	3.30	0.110	0.130
L	7.50	7.74	0.295	0.305
M	0°	10°	0°	10°
S	0.51	1.01	0.020	0.040

3. Documentation and packaging inspection:

Gross Weight	4 g	Quantity Received	1 PCS
Number of Boxes	N/A	Full Label	N/A
Package Type	Bulk	Moisture Protection	N/A
MSL	N/A	ESD Protection	Exist

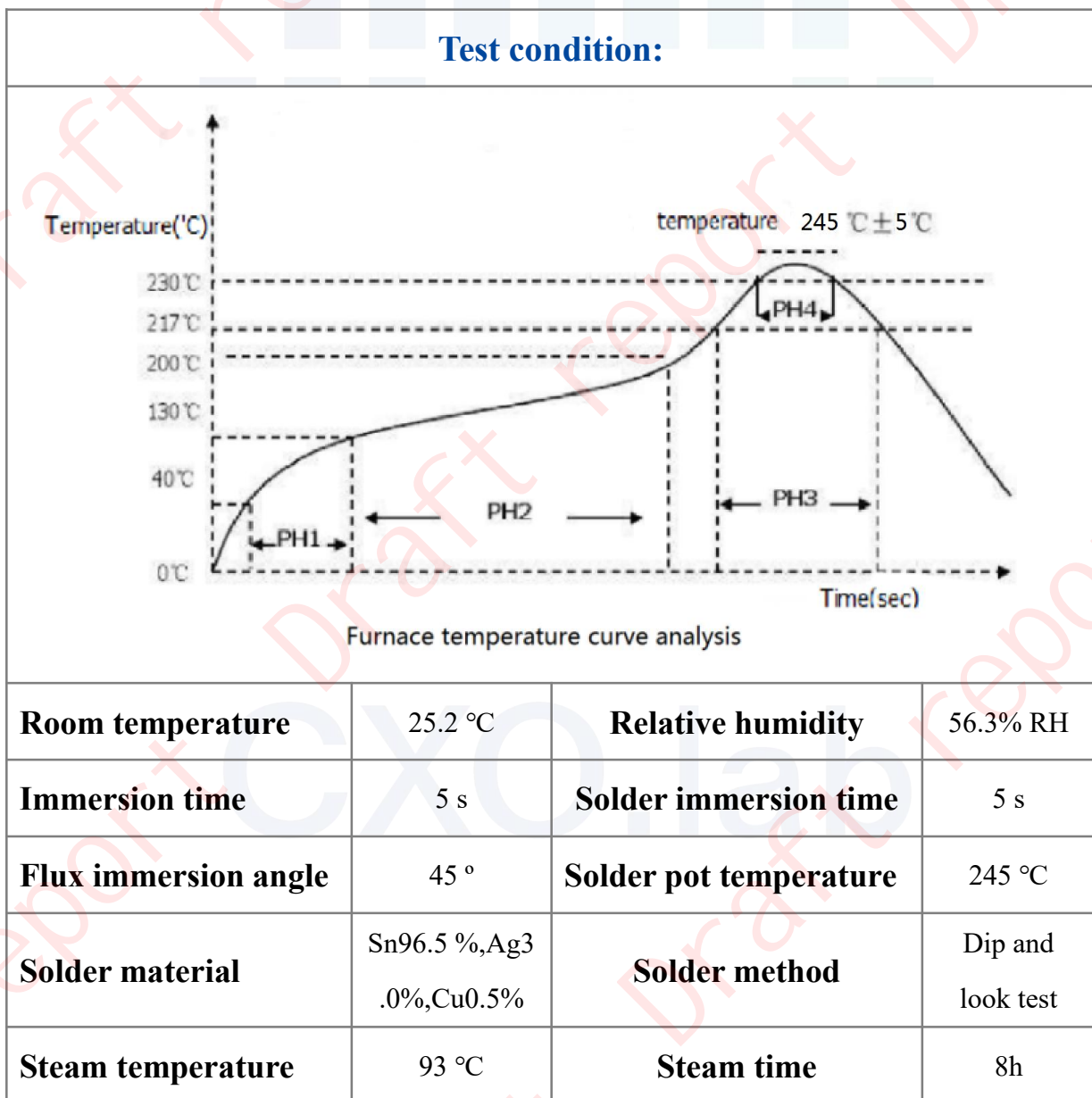
Note: All devices contain 1 PCS sample.



4. Solderability analysis:

Applicable standard: **MIL-STD-883L-2019 2003.13**

Solderability tested were performed on 1 PCS sample using the dip and look methods. 1 PCS pass solderability test. The dipped portion of the terminations is more than 95% covered by a continuous new solder coating.

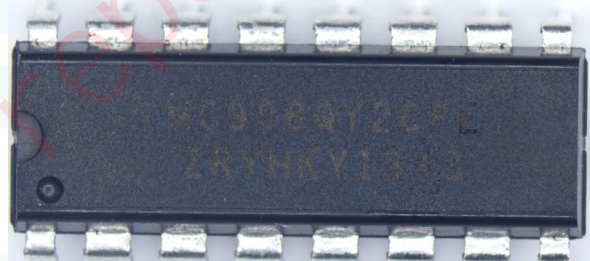
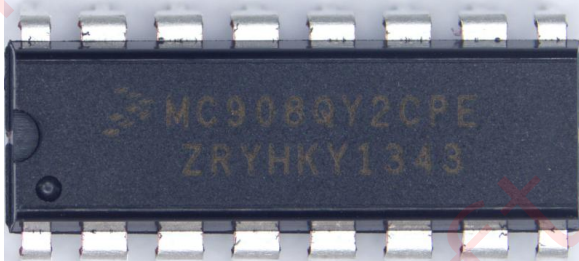


Tin furnace temperature



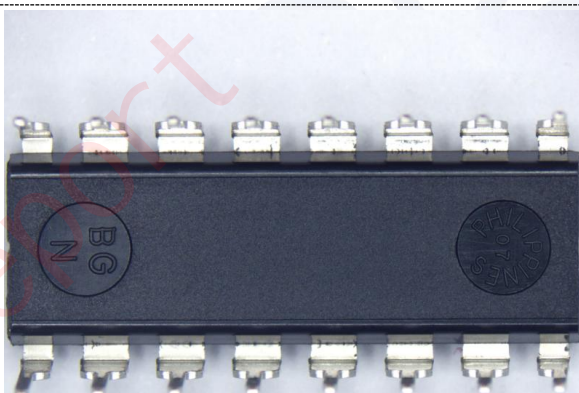
Before top view

After top view

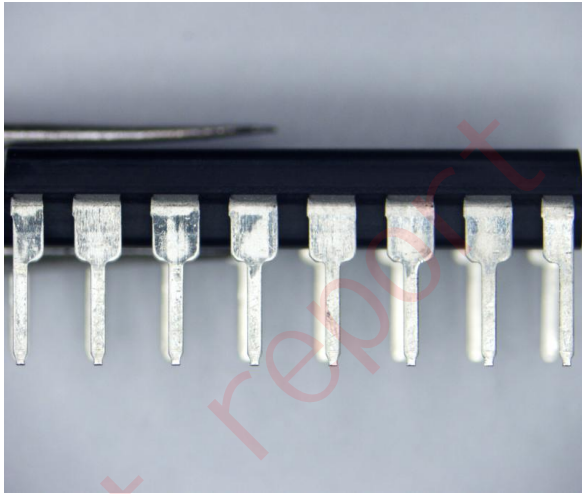


Before bottom view

After bottom view



Before leads - 1



After leads - 1



Before leads - 2



After leads - 2



-End of Report-

Disclaimer

1. The test report is invalid without the stamp of “company report seal” and “cross-page seal”.
2. The copy of the test report is invalid without the stamp of “company report seal” and “cross-page seal”.
3. The test report is invalid without the signatures of operator, supervisor and manager.
4. A modified or partial copy of the test report is invalid.
5. When there is disagreement with the test report, please submit the issue to us within 15 days from the date of receipt. Overdue information will not be accepted.
6. The test report is only reflective of the test results of testing samples, not of the quality of batch products.
7. The * indicates subcontract test data.
8. The report is stamped with the CMA mark, indicating that the test items are within the scope of qualification recognition; No CMA mark is stamped, indicating that some/all of the test items are not within the scope of CMA qualification, and the results are for internal use by the customer only.



CXOLab WeChat official account

Tel: 0755-83762185 **Email:** engineer@iclabcn.com

Website: <https://www.iclabcn.com>

Add: F/r 2nd, Building A, Yingdafeng Industrial Park, No.393, Jihua Rd.,
Longgang Dist., Shenzhen, China